

This small selection of drawings and etchings of the dancer Wayne Eagling was created in the summer of 1978, they are all I have left of a large project that was a big part of my final degree show at Chelsea School of Art. I graduated in 1980. The project was the result of winning a travel bursary award from Thames Television; I was one of eight art students across the UK who received an award of £400, which seemed like a fortune. I spent it on a Greyhound bus pass, a Freddie Laker standby flight (slept on the street for that) and nights in YWCAs across America, Canada and Mexico. I spent night after night in the wings of theatres from Montreal to San Francisco to Mexico City. It was a bit of an adventure over 10,000 miles. David Drew, a character dancer with the Royal Ballet, took me under his wing, he looked out for me on this seven week tour across the states. I publish this in memory of David, who passed away 16th October 2015. I have many lovely memories, including my painting his portrait in 2007.



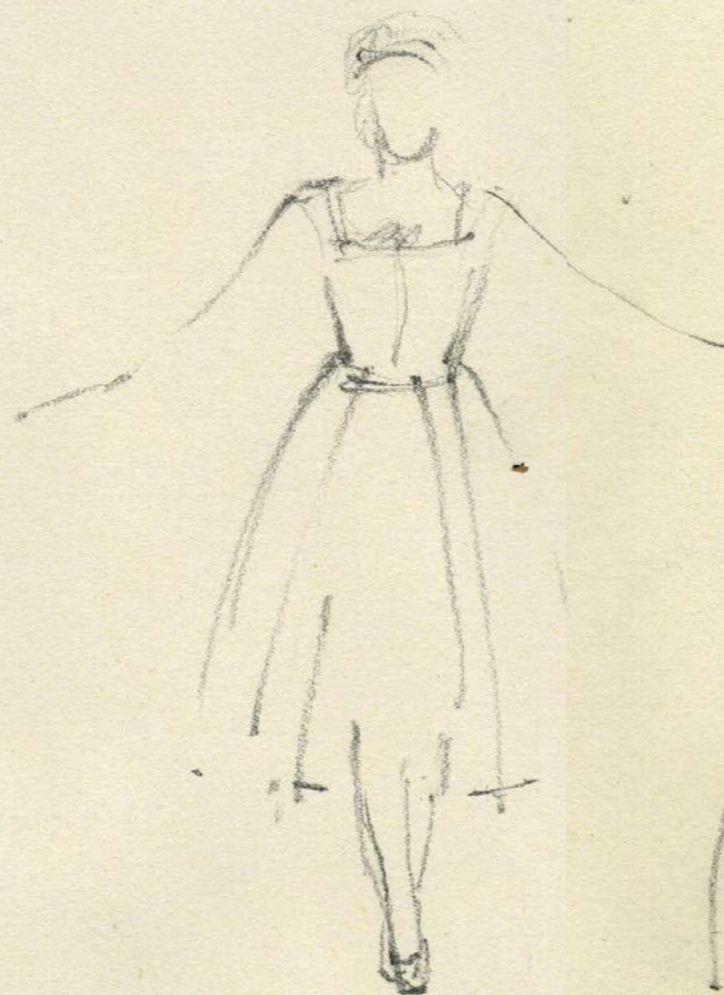


Sally Bamber



Sally Bamber





102

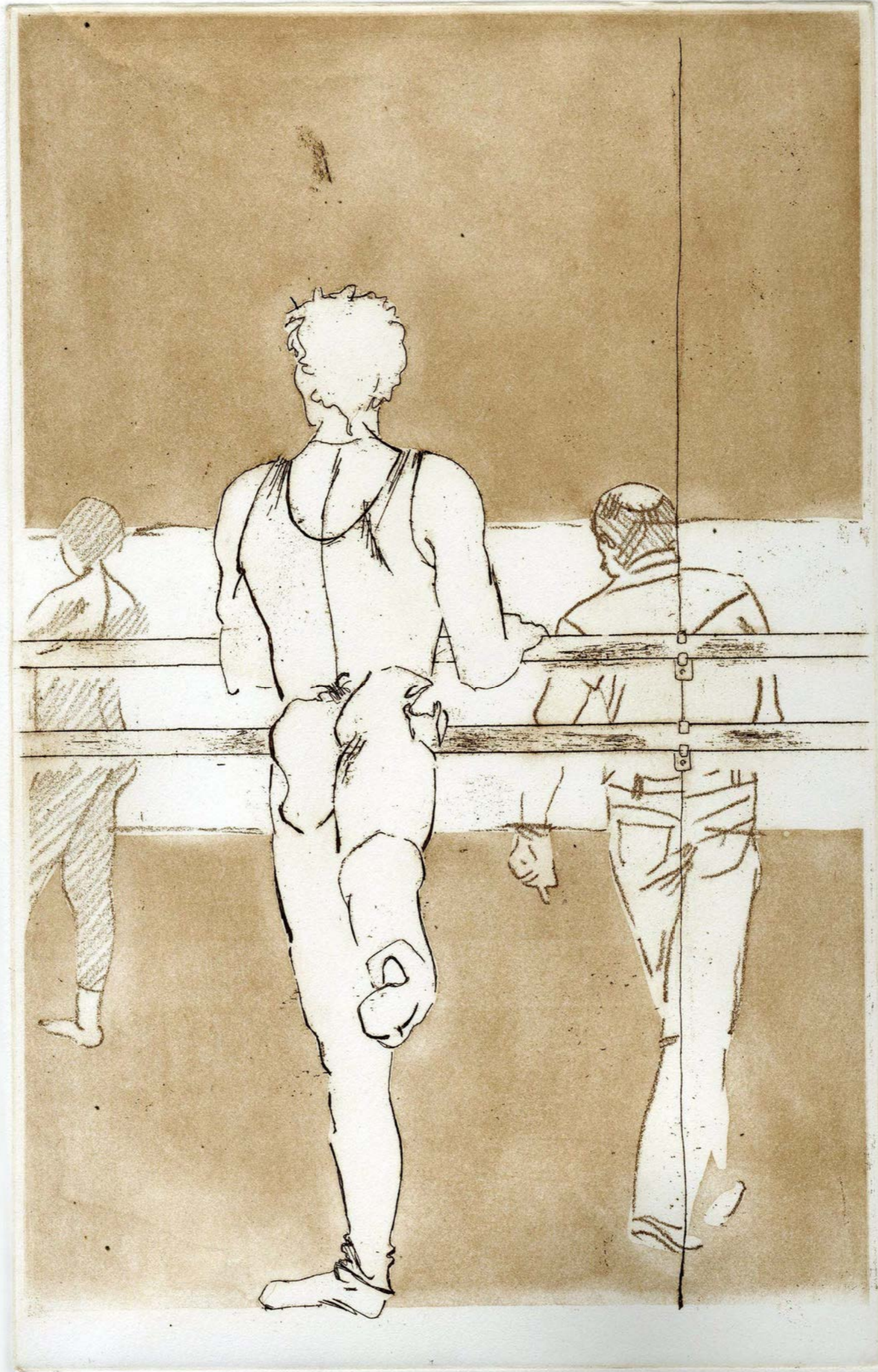
Sally Bamber



Sally Bamber

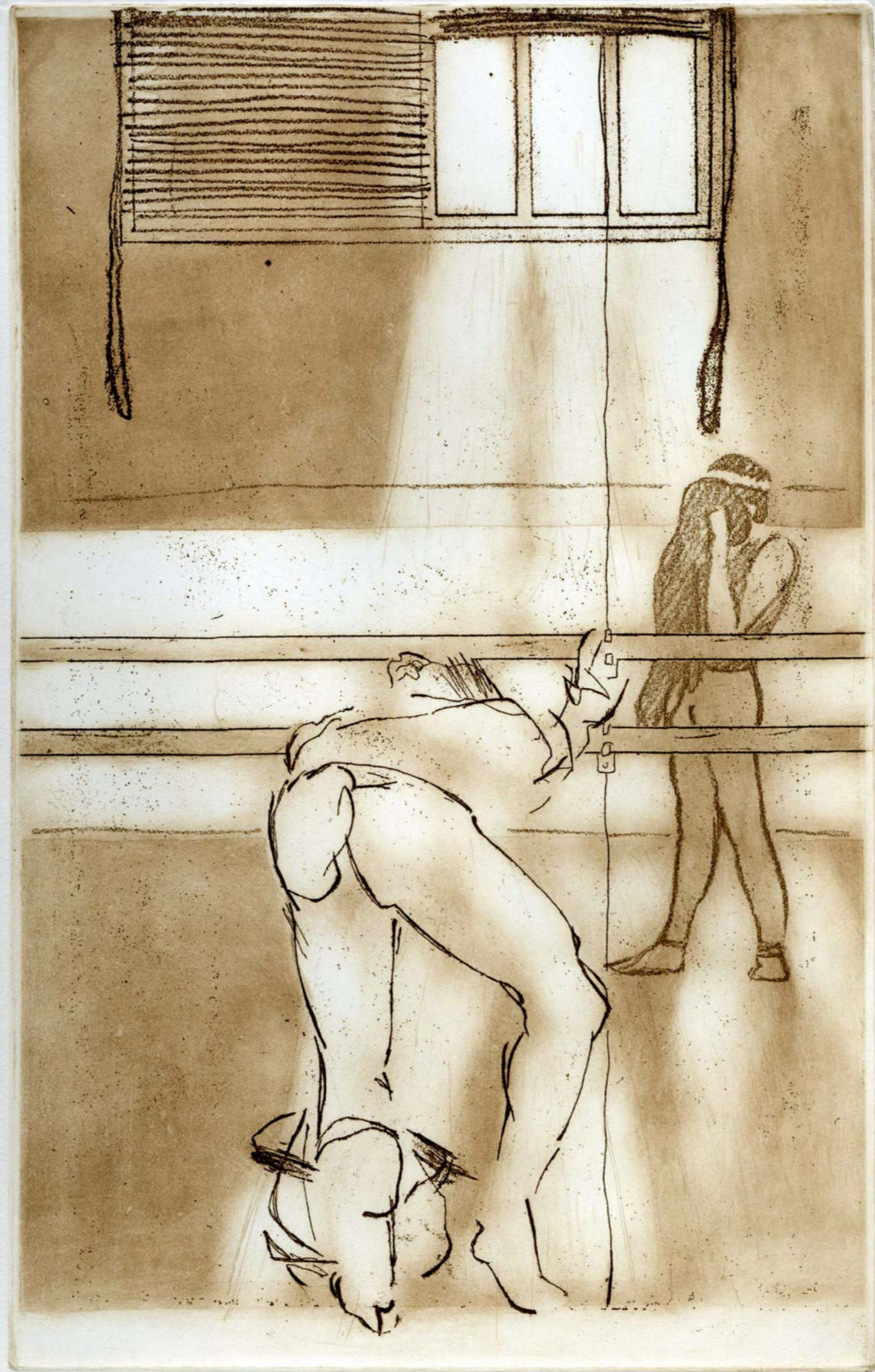


Sally Bamber





Sally Bamber



Sally Bamber

